

# MILLIKEN®



## COMPACT CHECK VALVES

401 S. Highland Avenue  
Aurora, IL 60506  
phone: 877-655-6858  
fax: 630-844-4160  
www.millikenvalve.com



### **Spring Loaded Check Valves**

Standard Features .....	1
-------------------------	---

### **Double Disc Check Valve**

Scope of the Line .....	1
Technical Specifications .....	1
Drawing .....	2
Materials of Construction .....	2

### **Globe Style Check Valve**

Scope of the Line .....	3
Technical Specifications .....	3
Drawing .....	4
Materials of Construction .....	4

### **Compact Wafer-Silent Check Valve**

Scope of the Line .....	5
Technical Specifications .....	5
Drawing .....	6
Materials of Construction .....	6

### **Pressure Drop Charts**

Double Disc Check Valve.....	7
Globe Style Check Valve .....	7
Compact Wafer-Silent Check Valve .....	8

## Spring Loaded Check Valves Standard Features

- Spring Loaded for Non-Slam Closure
- Heavy Duty Ductile Iron Body
- Automatic Operation
- Designed for ANSI Class 125 Flange Bolting
- Economical Purchase Price
- Suitable for Horizontal or Vertical (up) Piping
- Stocked in Sizes 2" thru 24"
- Compact Design

---

## Scope of the Line: Double Disc Check Valve – Milliken® Series 740A

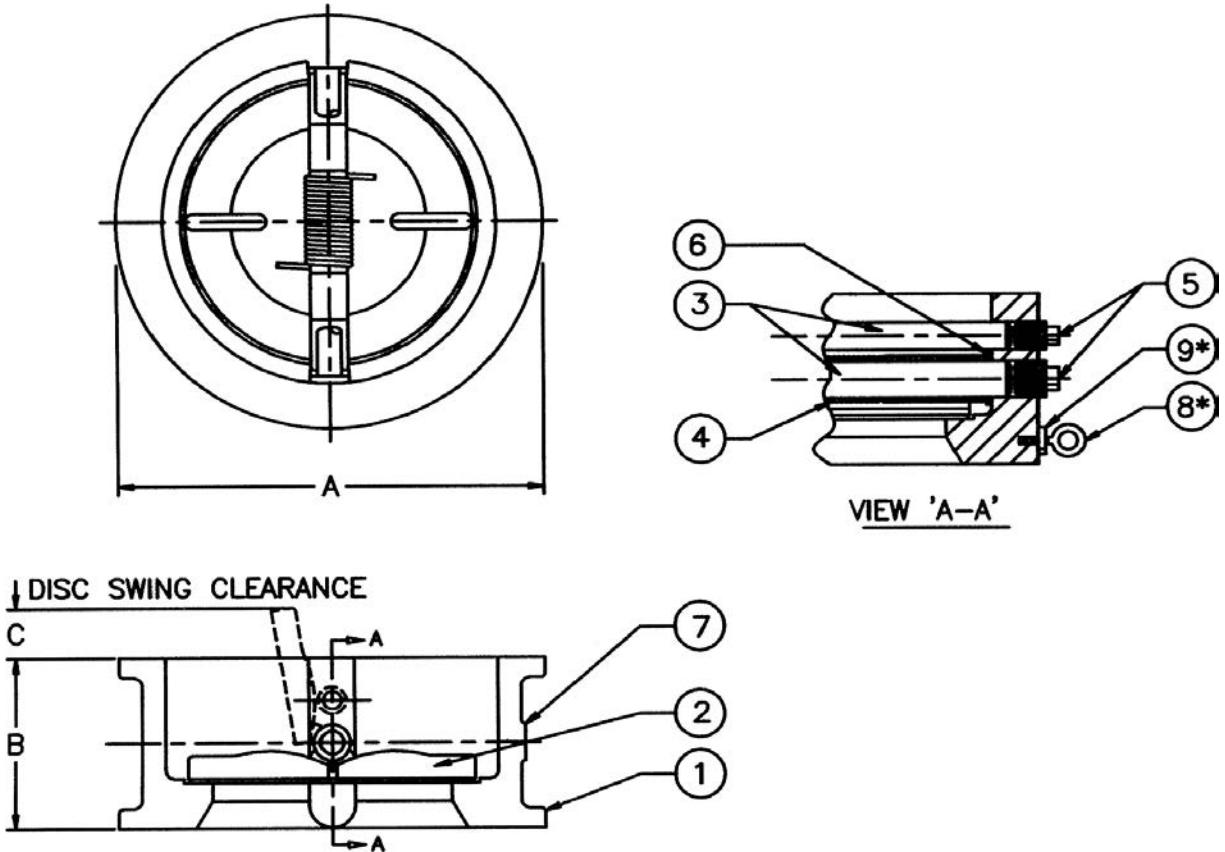


<b>Body:</b>	Ductile Iron-Wafer Pattern
<b>Disc:</b>	304 Stainless Steel
<b>Seat:</b>	EPDM (elastomer)
<b>Rating:</b>	250 psi
<b>Availability:</b>	2" thru 36"

### Double Disc Check Valve: Technical Specifications

Check valve shall be of the double disc, wafer style with torsion spring induced closure. Valve shall be Wafer style for bolting between ANSI Class 125 flanges and shall be rated for 250 PSI service. Valves have a Ductile Iron body (ASTM A-536 65-45-12) to fit inside 125# ANSI bolt circles, a two piece Stainless Steel disc (ASTM type 304), type 304 Stainless Steel dual shafts, ASTM A313, type 304 Stainless Steel torsion spring and have an integrally molded elastomer seat vulcanized to the body. Valve for horizontal flow shall be installed with the shafts in vertical position. Double disc check valve shall be Milliken® Series 740A.

# Double Disc Check Valve – Milliken® Series 740A



## MATERIALS OF CONSTRUCTION

ITEM	QTY	DESCRIPTION	MATERIAL
1	1	BODY/SEAT	DUCTILE IRON/EPDM
2	2	DISC	304 STN. STL.
3	2	SHAFT	304 STN. STL.
4	2	SPRING	304 STN. STL.
5	4	PLUG	304 STN. STL.
6	AR	WASHER	304 STN. STL.
7	1	NAME PLATE	ALUMINUM
8*	2	EYE BOLT	STEEL
9*	2	HEX NUT	STEEL

\*NOTE: ITEMS 8 & 9 FOR 8" AND LARGER VALVES

SIZE	2	2.5	3	4	5	6	8	10	12	14	16	18	20	24
A	4.10	4.88	5.33	6.88	7.75	8.75	11	13.38	16.13	17.75	20.25	21.63	23.88	28.25
B	2.13	2.13	2.25	2.5	2.75	3	3.75	4.25	5.63	7.25	7.5	8	8.38	8.75
C	—	.16	.63	.94	1.34	1.72	2.5	3.38	4.13	3.13	4.38	5.13	6.0	8.5
WT	8.8	12.6	18.3	26.2	34.8	42.1	75	119.5	188.1	227.3	282.2	337.3	370.6	638.2

NOTE: Drawings are for information purposes only; please request certified drawings before preparing piping diagrams.

Consult factory for sizes larger than 24"

## Scope of the Line: Globe Style Check Valve – Milliken® Series 821A

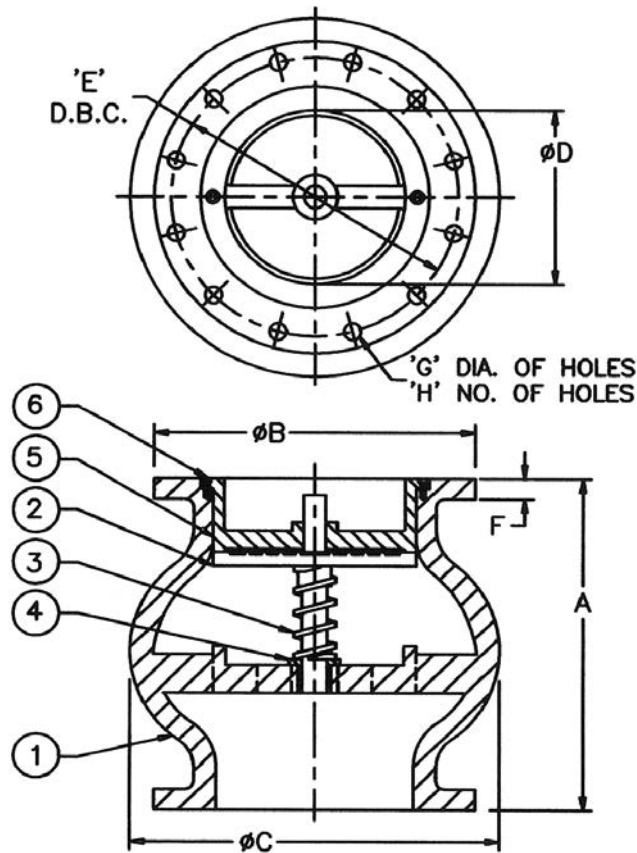


<b>Body:</b>	Ductile Iron
<b>Disc:</b>	Stainless Steel
<b>Seat:</b>	Stainless Steel/EPDM
<b>Rating:</b>	250 psi
<b>Flanges:</b>	ASME B16.1 CL.125
<b>Availability:</b>	2" thru 24"

### Globe Style Check Valve: Technical Specifications

Check valve shall be of the silent operating type and the same size as the entering pipe. Globe style thru 24 inches shall be rated for 250PSI service, have a Ductile Iron body (ASTM A-536 65-45-12), 125# ANSI Flat Face Flanges, ASTM A313 Type 304 Stainless Steel helical or conical spring, a Stainless Steel (ASTM type 304) seat and dual guided disc (top and bottom), 304 Stainless Steel guide bushing and type 304 Stainless Steel guide pins. Check valve to have a minimum open area in the body of 110% of the area of the entering or corresponding pipe. Valve is to operate silently in either vertical or horizontal positions, flow up or down. Globe style check valve shall be Milliken® Series 821A.

# Globe Style Check Valve – Milliken® Series 821A



## MATERIALS OF CONSTRUCTION

ITEM	QTY	DESCRIPTION	MATERIAL
1	1	BODY	DUCTILE IRON
2	1	DISC	304 STN. STL.
3	1	SPRING	304 STN. STL.
4	1	BUSHING	304 STN. STL.
5	1	SEAT	304 STN. STL./EPDM
6	AR	CAPSCREW	304 STN. STL.

SIZE	2	2.5	3	4	5	6	8	10	12	14	16	18	20	24
A	4	5.5	6	7.25	8.5	9.75	12.5	15.5	14.25	15.75	17.63	18.75	20.63	24
B	6	7	7.5	9	10	11	13.5	16	19	21	23.5	25	27.5	32
C	4.63	6	6.88	8.5	9.75	11.13	16.13	17.88	19.13	22.5	26	29	32.75	34
D	2.13	2.75	3	4	5	6	8	10	12	13.88	15.25	16.75	19.25	20.75
E	4.75	5.5	6	7.5	8.5	9.5	11.75	14.25	17	18.75	21.25	22.75	25	29.5
F	.62	.69	.75	.94	.94	1	1.12	1.19	1.25	1.38	1.44	1.56	1.69	1.88
G	.75	.75	.75	.75	.88	.88	.88	1	1	1.12	1.12	1.25	1.25	1.38
H	4	4	4	8	8	8	8	12	12	12	16	16	20	20
WT	14.3	24.4	28.6	44.1	56	83.4	142.4	219	362.6	465.1	660.5	919	1174	1586

NOTE: Drawings are for information purposes only; please request certified drawings before preparing piping diagrams.

Consult factory for sizes larger than 24"

## Scope of the Line: Compact Wafer-Silent Check Valve – Milliken® Series 720A

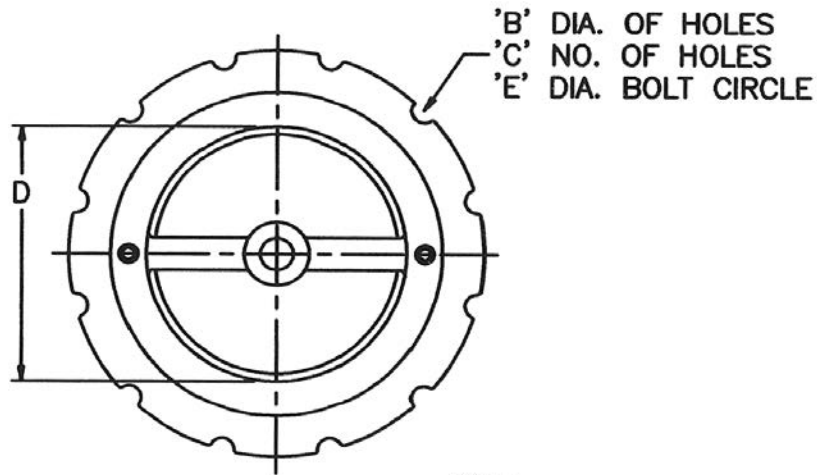


<b>Body:</b>	Ductile Iron
<b>Disc:</b>	304 Stainless Steel
<b>Seat:</b>	Stainless Steel/EPDM
<b>Rating:</b>	250 psi
<b>Availability:</b>	2" thru 12"

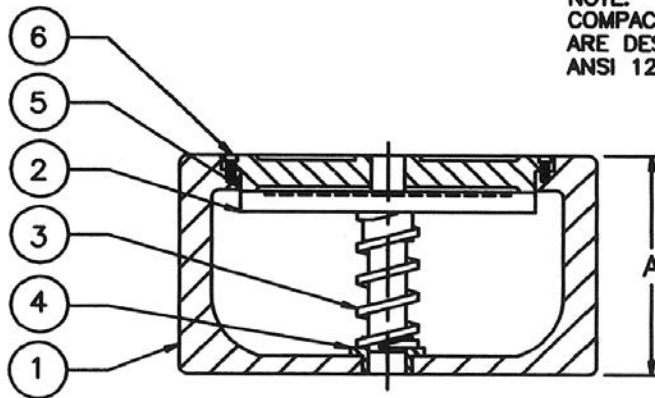
### COMPACT WAFER-SILENT CHECK VALVE: TECHNICAL SPECIFICATIONS

Check valve shall be of the silent wafer type and the same size as the entering pipe. Valves shall be the compact wafer style and have a pressure and temperature rating equal to or greater than the pipeline in which they are installed. Compact wafer-silent style check valves thru 12 inches shall be rated for 250PSI service for installation between ANSI Class 125 flanges, have a Ductile Iron body (ASTM A-536 65-45-12), ASTM A313, Type 304 Stainless Steel helical or conical spring, a Stainless Steel guide bushing and type 304 Stainless Steel guide pins. Valves are to operate silently in either vertical or horizontal positions, flow up or down. Compact wafer-silent check valve shall be Milliken® Series 720A.

# Compact Wafer-Silent Check Valve – Series Milliken® 720A



NOTE:  
COMPACT SILENT CHECK VALVES  
ARE DESIGNED TO FIT INSIDE  
ANSI 125 AND 250 BOLT CIRCLES.



## MATERIALS OF CONSTRUCTION

ITEM	QTY	DESCRIPTION	MATERIAL
1	1	BODY	DUCTILE IRON
2	1	DISC	304 STN. STL.
3	1	SPRING	304 STN. STL.
4	1	BUSHING	304 STN. STL.
5	1	SEAT	304 STN. STL./EPDM
6	AR	CAPSCREW	304 STN. STL.

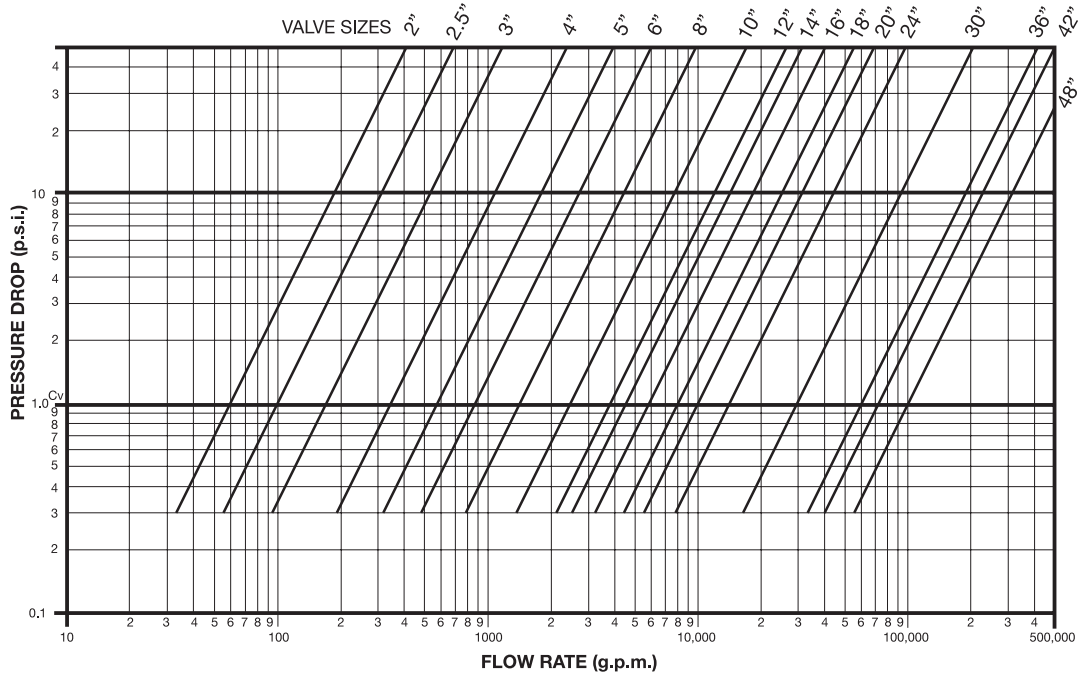
SIZE	2	2.5	3	4	5	6	8	10	12
A	2.63	2.88	3.13	4	4.75	5.5	6.5	8.25	11.25
B	0.75	0.75	0.75	0.75	0.88	0.88	0.88	1.00	1.00
C	4	4	4	8	8	8	8	12	12
D	2.0	2.5	3.0	4.0	5.0	6.0	8.0	10.0	12.0
E	4.75	5.50	6.00	7.50	8.50	9.50	11.75	14.25	17.0
APPROX. WGT. (LB.)	5.5	8.0	10.0	19.0	27.0	39.0	86.0	165.0	339.0

NOTE: Drawings are for information purposes only; please request certified drawings before preparing piping diagrams.

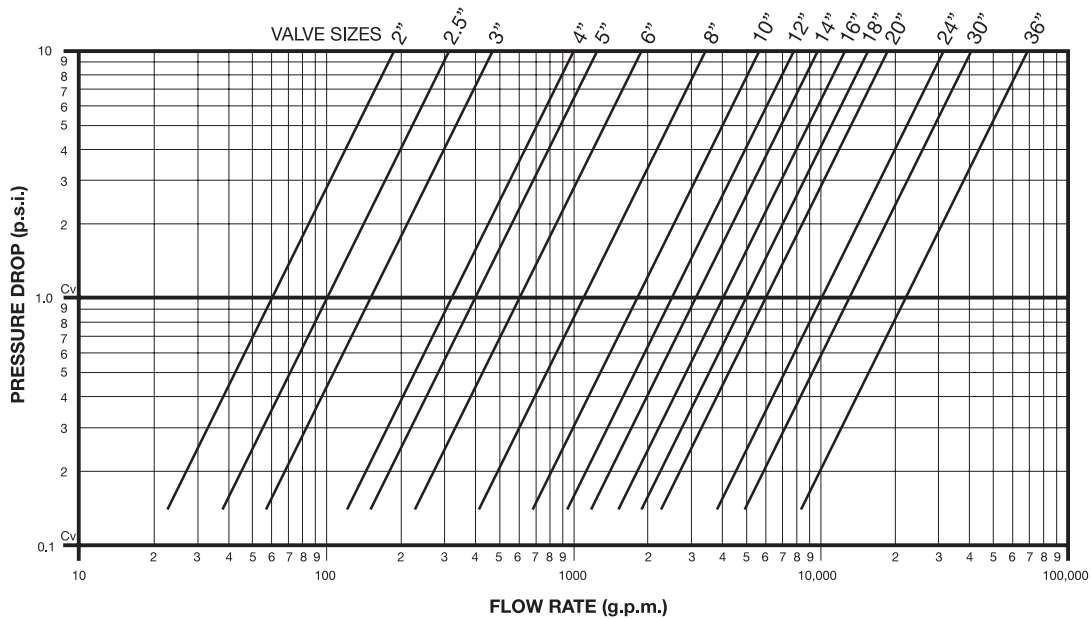


# Pressure Drop Chart for Double Door Type Check (740A) & Globe Type Silent Check (821A) Valves

## Double Disc Check Valve – Series 740A



## Globe Style Check Valve – Series 821A

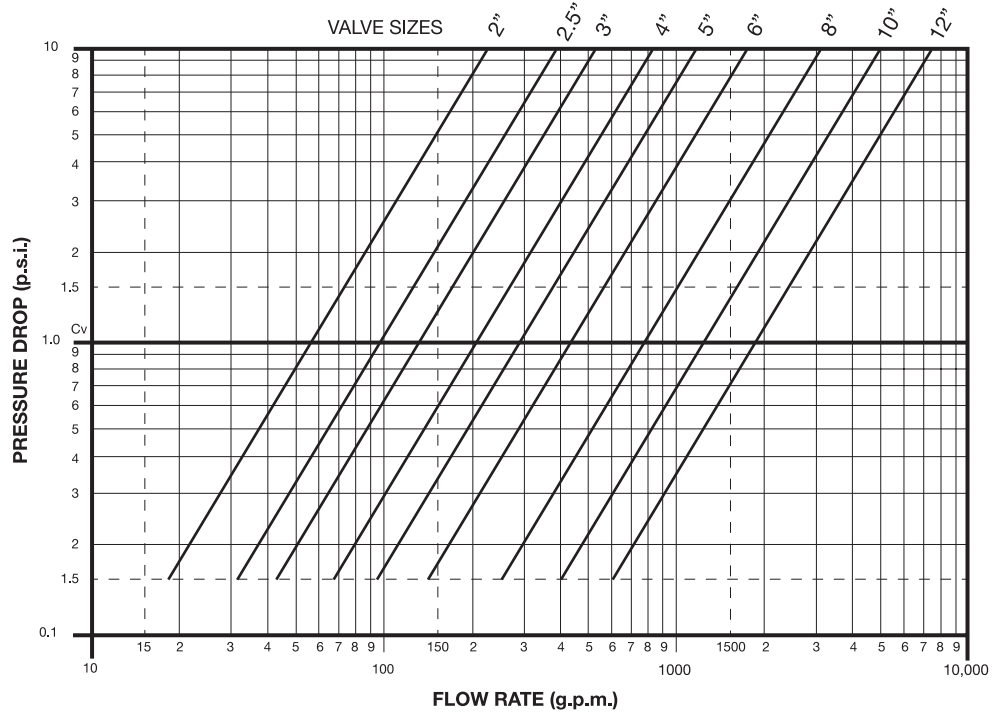


These charts are based on the flow of clean water at ambient temperature. Consult our Engineering Department for pressure drop information on steam, gases or viscous fluids.

Good piping practice recommends placement of check valves a distance equal to 5 to 10 pipe diameters from any turbulence producing device such as elbow, pumps etc.

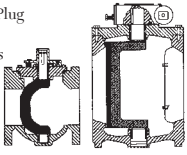
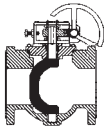
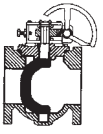
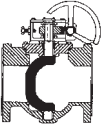
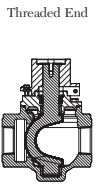
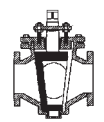

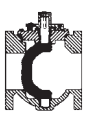

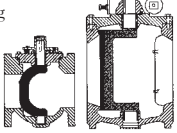
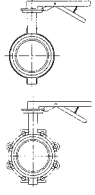
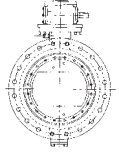



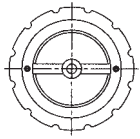
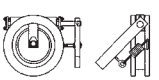
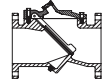
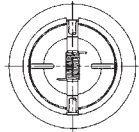
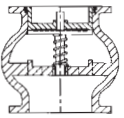
# Pressure Drop Chart for Compact Wafer Silent Check (720A) Valve

## Compact Wafer Silent Check Valve – Series 720A



# Notes

# Milliken® Products Guide

<p><b>Series 600/601</b> Eccentric Plug Valve</p> <p>Welded Nickel Seat Stainless Steel Bearings ANSI-B16.1 Flanges Solid Ductile Iron Plug Low Pressure Drop Flanged &amp; MJ Ends Sizes 2"-72" FL Sizes 3"-48" MJ</p> <p>Flanged and MJ</p> 	<p><b>Series 601SS</b> Eccentric Plug Valve</p> <p>Integral Stainless Seat Stainless Steel Bearings Stainless Steel Body ANSI B16.5 Class 150 Flanges Solid Stainless Steel Plug Low Pressure Drop Size: 1/2"-24"</p> 	<p><b>Series 601RL</b> Eccentric Plug Valve</p> <p>Soft or Hard Rubber Lining Stainless Steel Bearings ANSI B16.1 Flanges Solid Ductile Iron Plug Low Pressure Drop Sizes 3"-54" Metal Plugs Available - Consult Factory</p> <p>Rubber Lined</p> 	<p><b>Series 602</b> Eccentric Plug Valve</p> <p>Welded Nickel Seat Stainless Steel Bearings ANSI B16.1 Class 250 Flanges Solid Ductile Iron Plug Low Pressure Drop Sizes 2-1/2"-54"</p> <p>High Pressure</p> 
<p><b>Series 613A</b> Eccentric Plug Valve</p> <p>Ductile Iron Construction Round Port Stainless Steel Bearings Low Pressure Drop Memory Stop NPT End Connections Sizes 1/2"-2"</p> <p>Threaded End</p> 	<p><b>Series 604E</b> Eccentric Plug Valve</p> <p>Epoxy Seat Solid Ductile Iron Plug Stainless Steel Bearings Low Pressure Drop Lift &amp; Turn NOT Required High Solids &amp; Flow Capacity Sizes 3"-16"</p> <p>Three Way Valve</p> 	<p><b>Series 606</b> Eccentric Plug Valve</p> <p>Welded Nickel Seat Stainless Steel Bearings AWWA C-606 Grooved Solid Ductile Iron Plug Low Pressure Drop Ductile or Steel Pipe Sizes 3"-24"</p> <p>Grooved End</p> 	<p><b>Series 611/610</b> Eccentric Plug Valve</p> <p>Ductile Iron Body ANSI B16.1 Flanges MJ AWWA C111 Welded Nickel Seat Solid Ductile Iron Plug Low Pressure Drop Sizes 2"-72" FL Sizes 3"-48" MJ</p> <p>Flanged and MJ</p> 
<p><b>Model 625</b> Eccentric Plug Valve</p> <p>Available in Threaded and Flanged Ends Rated for 175 psi Sizes 1/2"-4" UL/CGA Listed</p> 	<p><b>Series 600FP/601FP</b> Eccentric Plug Valve</p> <p>Full/100% PORT Welded Nickel Seat Stainless Steel Bearings ANSI-B16.1 Flanges Solid Ductile Iron Plug Low Pressure Drop Flanged &amp; MJ Ends Sizes 2"-48" FL Sizes 3"-48" MJ</p> 	<p><b>Figure 396/397</b> General Service Butterfly Valve</p> <p>Meets MSS SP 67 Ductile Iron Body DI-NP Disc Other Materials Upon Request Wrench or Gear Operated Available 2"-48" Size Range</p> 	<p><b>Figure 510A/511A</b> AWWA Butterfly Valve</p> <p>Complies with AWWA C-504 Class 150B Flanged or MJ Cast iron body and disc Seat in body Flow through disc on 24" and larger Epoxy Paint on all sizes standard 3" - 72"</p> 
<p><b>Series 8500</b> AWWA Swing Check</p> <p>Full waterway Ductile Iron Construction Weight or Spring Air Cushion SS body seat ring Buna disc insert Sizes 3"-24"</p> 	<p><b>Series 8000</b> AWWA Swing Check</p> <p>Full waterway Weight or Spring Bronze/SS Body Seat Ring Bronze/Buna/EPDM disc insert Sizes 2"-36"</p> 	<p><b>Series 9000</b> AWWA Swing Check</p> <p>Clear waterway Weight or Spring Air or Oil Cushion Bronze/SS Body seat ring Bronze/Buna/EPDM disc insert Sizes 3"-72"</p> 	<p><b>Model 720A</b> Wafer Check Valve</p> <p>Center Guided Check Valve Rated for 250 psi SS Disc/EPDM Seat Sizes 2"-12"</p> 
<p><b>Series 700</b> Wafer Check Valve</p> <p>ANSI Class 125/150 High Flow Capacity Narrow Face-to-Face Sizes 3"-12" 316 SS Internals Disc Position Indicator</p> <p>Wafer Check Valve</p> 	<p><b>Figure 851</b> Flex Check</p> <p>Million Cycle Certification Complete Ductile Iron Construction 250 psi Pressure Rating Fully Epoxy Lined Interior No Internal Shafts, Bearings or Bushings No External Levers, Weights or Springs Mechanical Indicator (3"-16") 2"-24" Size Range Backflush Devices Proximity Switches</p> 	<p><b>Figure 740A</b> Double Disc Check Valve</p> <p>Wafer pattern check valve rated for 250 psi. Available in sizes 2"-36" with a SS Disc/EPDM Seat</p> 	<p><b>Figure 821A</b> Globe Style Check Valve</p> <p>Center guided check valve. SS Disc/EPDM Seat and is available in sizes 2"-24".</p> 

The trademarks, logos and service marks displayed in this document herein are the property of Henry Pratt Company, LLC, its affiliates or other third parties. Products above marked with a section symbol (§) are subject to patents or patent applications. For details, visit [www.mwppat.com](http://www.mwppat.com). Copyright © 2016 Henry Pratt Company, LLC. All Rights Reserved.

# MILLIKEN®

# Mueller Co.

Reliable Connections™