

CHECK VALVES



The Milliken Valve Company designs, develops, manufactures and markets plug, butterfly, and check valves and their respective controls and actuators. These valves are used primarily in the water, wastewater, and industrial markets.

Milliken Valve was started over two decades ago manufacturing the eccentric plug valve for the waste water and HVAC marketplace. Growth has been constant with the addition of a AWWA butterfly valve, general service butterfly valve, swing check valve, rubber flapper check valve, double disc check valve, wafer (outside spring) check valve, globe style check valve and compact wafer check valve. As Milliken has added products over the years, it has been necessary to expand the manufacturing facility as well. Milliken is currently in its fourth facility with over 100,000 square feet of manufacturing space. The facility is currently located in Bethlehem, Pennsylvania.

Milliken believes that in order to satisfy customers, our products need to be considered the best design and the highest quality within the industry. All of our valves have had extensive testing before they are marketed or sold. Milliken's quality standards are a step above the industry norm, and Milliken is committed to standing behind its products in the field. All valves are tested in complete conformance to applicable standards before shipment. In addition, valve designs are routinely sent to independent testing facilities to ensure they meet or exceed expectations.



2625 Brodhead Road
Suite 100
Bethlehem, PA 18020-9081
phone: 610.861.8803
fax: 610.861.8094
www.millikenvalve.com



Spring Loaded Check Valves

| | |
|-------------------------|---|
| Standard Features | 2 |
|-------------------------|---|

Double Disc Check Valve

| | |
|---------------------------------|---|
| Scope of the Line | 2 |
| Technical Specifications | 2 |
| Drawing | 3 |
| Materials of Construction | 3 |

Globe Style Check Valve

| | |
|---------------------------------|---|
| Scope of the Line | 4 |
| Technical Specifications | 4 |
| Drawing | 5 |
| Materials of Construction | 5 |

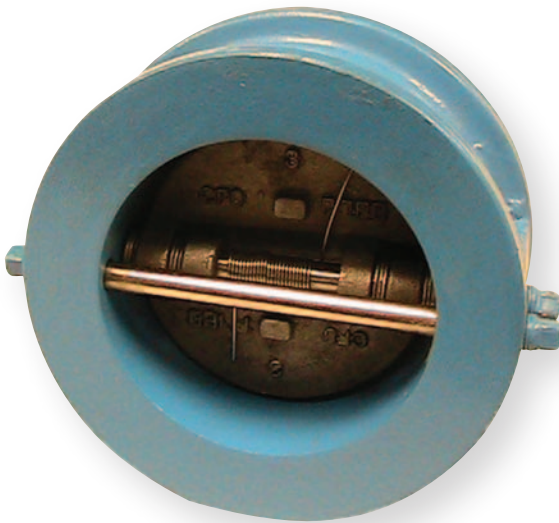
Compact Wafer-Silent Check Valve

| | |
|---------------------------------|---|
| Scope of the Line | 6 |
| Technical Specifications | 6 |
| Drawing | 7 |
| Materials of Construction | 7 |

Spring Loaded Check Valves Standard Features

- Spring Loaded for Non-Slam Closure
- Heavy Duty Ductile Iron Body
- Automatic Operation
- Designed for ANSI Class 125 Flange Bolting
- Economical Purchase Price
- Suitable for Horizontal or Vertical (up) Piping
- Stocked in Sizes 2" thru 24"
- Compact Design

Scope of the Line: Double Disc Check Valve – Series 740A

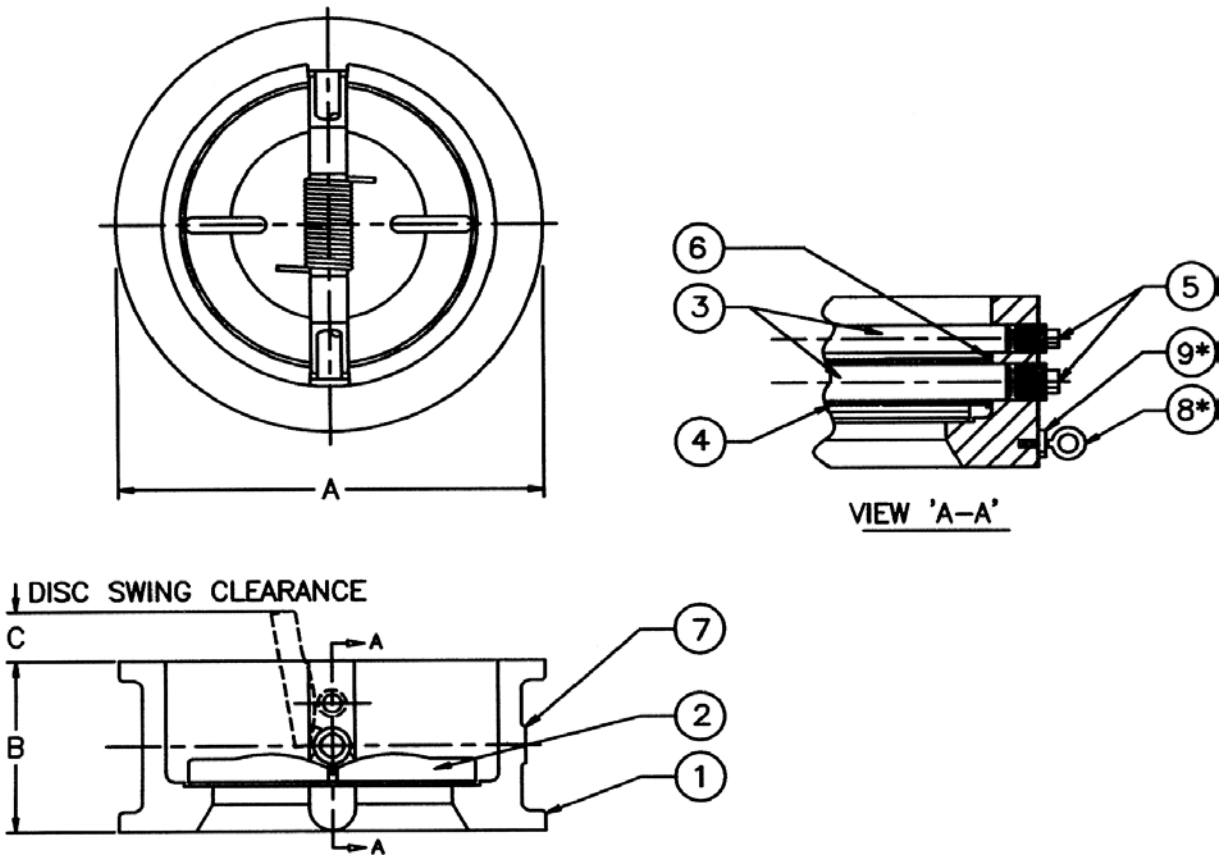


- Body:** Ductile Iron-Wafer Pattern
- Disc:** Stainless Steel
- Seat:** EPDM (elastomer)
- Rating:** 250 psi
- Availability:** 2" thru 36"

Double Disc Check Valve: Technical Specifications

Check valve shall be of the double disc, wafer style with torsion spring induced closure. Valve shall be Wafer style for bolting between ANSI Class 125 flanges. Valves have a Ductile Iron body (ASTM A-536 65-45-12) to fit inside 125# ANSI bolt circles, a two piece Stainless Steel disc (ASTM type 304), type 304 Stainless Steel dual shafts, ASTM A313, type 304 Stainless Steel torsion spring and have an integrally molded elastomer seat vulcanized to the body. Valve for horizontal flow shall be installed with the shafts in vertical position. Double disc check valve shall be Milliken Series 740A as manufactured by Milliken Valve.

Double Disc Check Valve – Series 740A



MATERIALS OF CONSTRUCTION

| ITEM | QTY | DESCRIPTION | MATERIAL |
|------|-----|-------------|-------------------|
| 1 | 1 | BODY/SEAT | DUCTILE IRON/EPDM |
| 2 | 2 | DISC | 304 STN. STL. |
| 3 | 2 | SHAFT | 304 STN. STL. |
| 4 | 2 | SPRING | 304 STN. STL. |
| 5 | 4 | PLUG | 304 STN. STL. |
| 6 | AR | WASHER | 304 STN. STL. |
| 7 | 1 | NAME PLATE | ALUMINUM |
| 8* | 2 | EYE BOLT | STEEL |
| 9* | 2 | HEX NUT | STEEL |

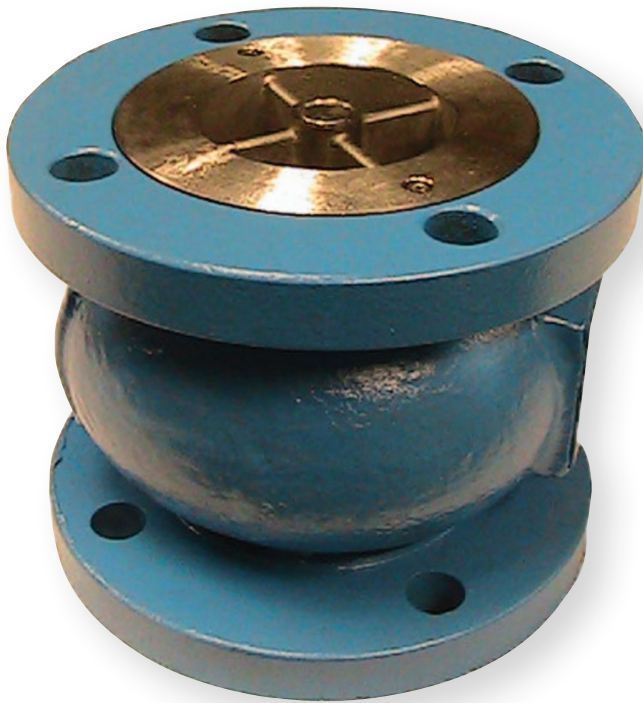
*NOTE: ITEMS 8 & 9 FOR 8" AND LARGER VALVES

| SIZE | 2 | 2.5 | 3 | 4 | 5 | 6 | 8 | 10 | 12 | 14 | 16 | 18 | 20 | 24 |
|------|------|------|------|------|------|------|------|-------|-------|-------|-------|-------|-------|-------|
| A | 4.10 | 4.88 | 5.33 | 6.88 | 7.75 | 8.75 | 11 | 13.38 | 16.13 | 17.75 | 20.25 | 21.63 | 23.88 | 28.25 |
| B | 2.13 | 2.13 | 2.25 | 2.5 | 2.75 | 3 | 3.75 | 4.25 | 5.63 | 7.25 | 7.5 | 8 | 8.38 | 8.75 |
| C | — | .16 | .63 | .94 | 1.34 | 1.72 | 2.5 | 3.38 | 4.13 | 3.13 | 4.38 | 5.13 | 6.0 | 8.5 |
| WT | 8.8 | 12.6 | 18.3 | 26.2 | 34.8 | 42.1 | 75 | 119.5 | 188.1 | 227.3 | 282.2 | 337.3 | 370.6 | 638.2 |

NOTE: Drawings are for information purposes only; please request certified drawings before preparing piping diagrams.

Consult factory for sizes larger than 24"

Scope of the Line: Globe Style Check Valve – Series 821A

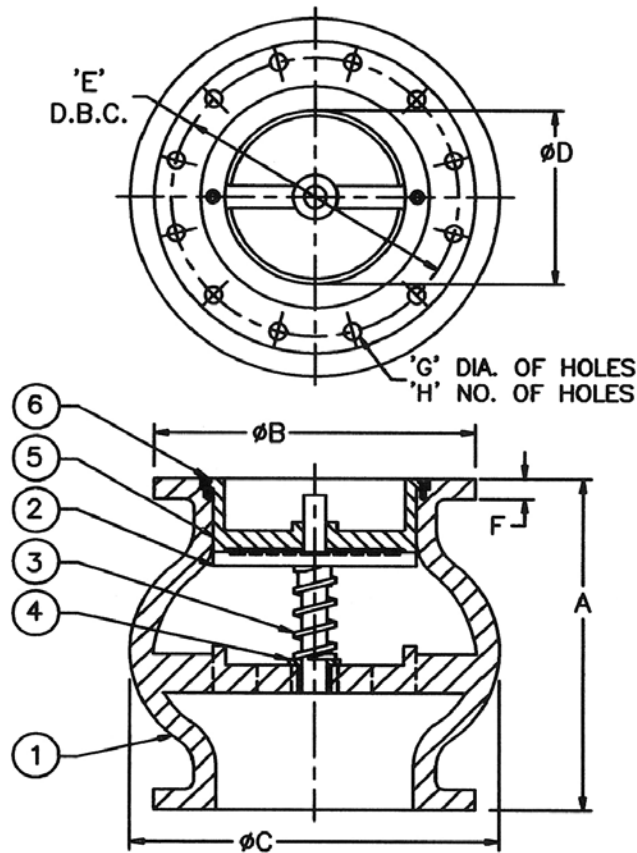


| | |
|----------------------|----------------------|
| Body: | Ductile Iron |
| Disc: | Stainless Steel |
| Seat: | Stainless Steel/EPDM |
| Rating: | 250 psi |
| Flanges: | ASME B16.1 CL.125 |
| Availability: | 2" thru 24" |

Globe Style Check Valve: Technical Specifications

Check valve shall be of the silent operating type and the same size as the entering pipe. Globe style thru 24 inches shall be rated 250PSI WOG, have a Ductile Iron body (ASTM A-536 65-45-12), 125# ANSI Flat Face Flanges, ASTM A313 Type 304 Stainless Steel helical or conical spring, a Stainless Steel (ASTM type 304) seat and dual guided disc (top and bottom), 304 Stainless Steel guide bushing and type 304 Stainless Steel guide pins. Check valve to have a minimum open area in the body of 110% of the area of the entering or corresponding pipe. Valve is to operate silently in either vertical or horizontal positions, flow up or down. Globe style check valve shall be Milliken Series 821A as manufactured by Milliken Valve.

Globe Style Check Valve – Series 821A



MATERIALS OF CONSTRUCTION

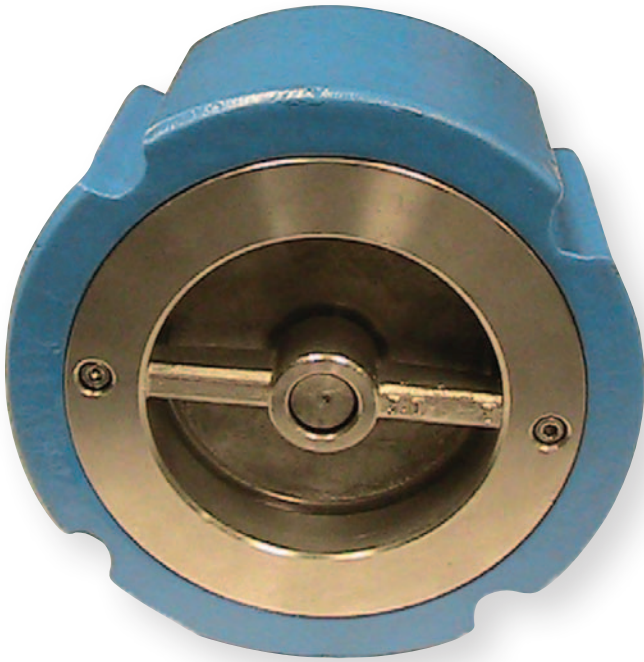
| ITEM | QTY | DESCRIPTION | MATERIAL |
|------|-----|-------------|--------------------|
| 1 | 1 | BODY | DUCTILE IRON |
| 2 | 1 | DISC | 304 STN. STL. |
| 3 | 1 | SPRING | 304 STN. STL. |
| 4 | 1 | BUSHING | 304 STN. STL. |
| 5 | 1 | SEAT | 304 STN. STL./EPDM |
| 6 | AR | CAPSCREW | 304 STN. STL. |

| SIZE | 2 | 2.5 | 3 | 4 | 5 | 6 | 8 | 10 | 12 | 14 | 16 | 18 | 20 | 24 |
|------|------|------|------|------|------|-------|-------|-------|-------|-------|-------|-------|-------|-------|
| A | 4 | 5.5 | 6 | 7.25 | 8.5 | 9.75 | 12.5 | 15.5 | 14.25 | 15.75 | 17.63 | 18.75 | 20.63 | 24 |
| B | 6 | 7 | 7.5 | 9 | 10 | 11 | 13.5 | 16 | 19 | 21 | 23.5 | 25 | 27.5 | 32 |
| C | 4.63 | 6 | 6.88 | 8.5 | 9.75 | 11.13 | 16.13 | 17.88 | 19.13 | 22.5 | 26 | 29 | 32.75 | 34 |
| D | 2.13 | 2.75 | 3 | 4 | 5 | 6 | 8 | 10 | 12 | 13.88 | 15.25 | 16.75 | 19.25 | 20.75 |
| E | 4.75 | 5.5 | 6 | 7.5 | 8.5 | 9.5 | 11.75 | 14.25 | 17 | 18.75 | 21.25 | 22.75 | 25 | 29.5 |
| F | .62 | .69 | .75 | .94 | .94 | 1 | 1.12 | 1.19 | 1.25 | 1.38 | 1.44 | 1.56 | 1.69 | 1.88 |
| G | .75 | .75 | .75 | .75 | .88 | .88 | .88 | 1 | 1 | 1.12 | 1.12 | 1.25 | 1.25 | 1.38 |
| H | 4 | 4 | 4 | 8 | 8 | 8 | 8 | 12 | 12 | 12 | 16 | 16 | 20 | 20 |
| WT | 14.3 | 24.4 | 28.6 | 44.1 | 56 | 83.4 | 142.4 | 219 | 362.6 | 465.1 | 660.5 | 919 | 1174 | 1586 |

NOTE: Drawings are for information purposes only; please request certified drawings before preparing piping diagrams.

Consult factory for sizes larger than 24"

Scope of the Line: Compact Wafer-Silent Check Valve – Series 720A

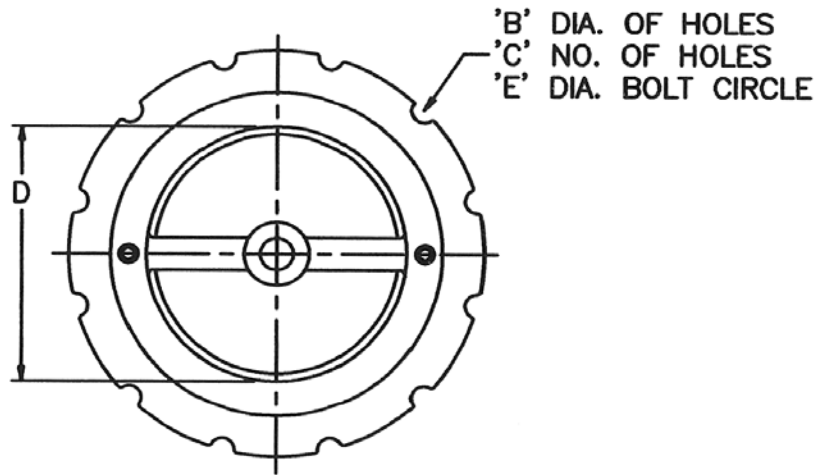


| | |
|----------------------|----------------------|
| Body: | Ductile Iron |
| Disc: | Stainless Steel |
| Seat: | Stainless Steel/EPDM |
| Rating: | 250 psi |
| Availability: | 2" thru 12" |

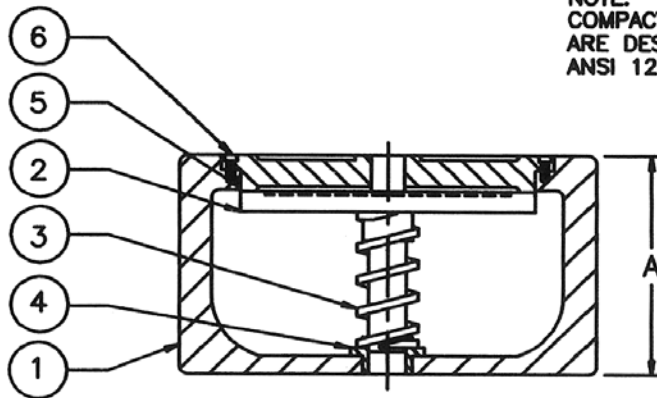
COMPACT WAFER-SILENT CHECK VALVE: TECHNICAL SPECIFICATIONS

Check valve shall be of the silent wafer type and the same size as the entering pipe. Valves shall be the compact wafer style and have a pressure and temperature rating equal to or greater than the pipeline in which they are installed. Compact wafer-silent style check valves thru 12 inches shall be rated for 250PSI WOG for installation between ANSI Class 125 or Class 250 flanges, have a Ductile Iron body (ASTM A-536 65-45-12), ASTM A313, Type 304 Stainless Steel helical or conical spring, a Stainless Steel guide bushing and type 304 Stainless Steel guide pins. Valves are to operate silently in either vertical or horizontal positions, flow up or down. Compact wafer-silent check valve shall be Milliken Series 720A as manufactured by Milliken Valve.

Compact Wafer-Silent Check Valve – Series 720A



NOTE:
COMPACT SILENT CHECK VALVES
ARE DESIGNED TO FIT INSIDE
ANSI 125 AND 250 BOLT CIRCLES.



MATERIALS OF CONSTRUCTION

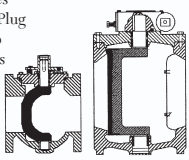
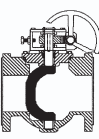
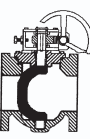
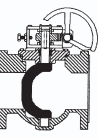
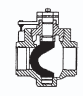








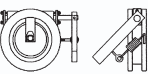
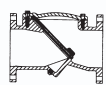
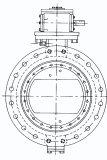
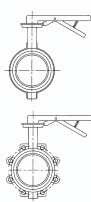
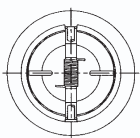
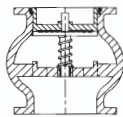
| ITEM | QTY | DESCRIPTION | MATERIAL |
|------|-----|-------------|--------------------|
| 1 | 1 | BODY | DUCTILE IRON |
| 2 | 1 | DISC | 304 STN. STL. |
| 3 | 1 | SPRING | 304 STN. STL. |
| 4 | 1 | BUSHING | 304 STN. STL. |
| 5 | 1 | SEAT | 304 STN. STL./EPDM |
| 6 | AR | CAPSCREW | 304 STN. STL. |

| SIZE | 2 | 2.5 | 3 | 4 | 5 | 6 | 8 | 10 | 12 |
|--------------------|------|------|------|------|------|------|-------|-------|-------|
| A | 2.63 | 2.88 | 3.13 | 4 | 4.75 | 5.5 | 6.5 | 8.25 | 11.25 |
| B | 0.75 | 0.75 | 0.75 | 0.75 | 0.88 | 0.88 | 0.88 | 1.00 | 1.00 |
| C | 4 | 4 | 4 | 8 | 8 | 8 | 8 | 12 | 12 |
| D | 2.0 | 2.5 | 3.0 | 4.0 | 5.0 | 6.0 | 8.0 | 10.0 | 12.0 |
| E | 4.75 | 5.50 | 6.00 | 7.50 | 8.50 | 9.50 | 11.75 | 14.25 | 17.0 |
| APPROX. WGT. (LB.) | 5.5 | 8.0 | 10.0 | 19.0 | 27.0 | 39.0 | 86.0 | 165.0 | 339.0 |

NOTE: Drawings are for information purposes only; please request certified drawings before preparing piping diagrams.

Notes

Notes

| | | | |
|---|--|---|---|
| <p>Series 600/601 Eccentric Plug Valve</p> <p>Welded Nickel Seat Stainless Steel Bearings ANSI-B16.1 Flanges Solid Ductile Iron Plug Low Pressure Drop Flanged & MJ Ends Sizes 2"-72" FL Sizes 3"-48" MJ</p>  <p>Flanged and MJ</p> | <p>Series 601SS Eccentric Plug Valve</p> <p>Integral Stainless Seat Stainless Steel Bearings Stainless Steel Body ANSI B16.5 Class 150 Flanges Solid Stainless Steel Plug Low Pressure Drop Size: 1/2"-24"</p>  | <p>Series 601RL Eccentric Plug Valve</p> <p>Soft or Hard Rubber Lining Stainless Steel Bearings ANSI B16.1 Flanges Solid Ductile Iron Plug Low Pressure Drop Sizes 3"-54" Metal Plugs Available - Consult Factory</p>  <p>Rubber Lined</p> | <p>Series 602 Eccentric Plug Valve</p> <p>Welded Nickel Seat Stainless Steel Bearings ANSI B16.1 Class 250 Flanges Solid Ductile Iron Plug Low Pressure Drop Sizes 2-1/2"-54"</p>  <p>High Pressure</p> |
| <p>Series 603 Eccentric Plug Valve</p> <p>Solid Ductile Iron Plug Round Port Low Pressure Drop Memory Stop NPT End Connections Sizes 1/2"-2"</p>  <p>Threaded End</p> | <p>Series 604E Eccentric Plug Valve</p> <p>Epoxy Seat Solid Ductile Iron Plug Stainless Steel Bearings Low Pressure Drop Lift & Turn NOT Required High Solids & Flow Capacity Sizes 3"-16"</p>  <p>Three Way Valve</p> | <p>Series 606 Eccentric Plug Valve</p> <p>Welded Nickel Seat Stainless Steel Bearings AWWA C-606 Grooved Solid Ductile Iron Plug Low Pressure Drop Ductile or Steel Pipe Sizes 3"-24"</p>  <p>Grooved End</p> | <p>Series 611/610 Eccentric Plug Valve</p> <p>Ductile Iron Body 285 CWP Ratings ANSI B16.1 Flanges MJ AWWA C111 Welded Nickel Seat Solid Ductile Iron Plug Low Pressure Drop Sizes 2"-72" FL Sizes 3"-48" MJ</p>  <p>Flanged and MJ</p> |
| <p>Model 625 Eccentric Plug Valve</p> <p>Available in Threaded and Flanged Ends Rated for 175 psi Sizes 1/2"-4" UL/CGA Listed</p>  | <p>Series 8000 AWWA Swing Check</p> <p>Full waterway Weight or Spring Bronze/SS Body Seat Ring Bronze/Buna/EPDM disc insert Sizes 2"-36"</p>  | <p>Series 8500 AWWA Swing Check</p> <p>Full waterway Ductile Iron Construction Weight or Spring Air Cushion SS body seat ring Buna disc insert Sizes 3"-24"</p>  | <p>Series 9000 AWWA Swing Check</p> <p>Clear waterway Weight or Spring Air or Oil Cushion Bronze/SS Body seat ring Bronze/Buna/EPDM disc insert Sizes 3"-72"</p>  |
| <p>Model 720A Wafer Check Valve</p> <p>Center Guided Check Valve Rated for 250 psi SS Disc/EPDM Seat Sizes 2"-12"</p>  | <p>Series 700 Wafer Check Valve</p> <p>ANSI Class 125/150 High Flow Capacity Narrow Face-to-Face Sizes 3"-12" 316 SS Internals Disc Position Indicator</p>  <p>Wafer Check Valve</p> | <p>Figure 851 Flex Check</p> <p>Million Cycle Certification Complete Ductile Iron Construction 285 psi Pressure Rating Fully Epoxy Lined Interior No Internal Shafts, Bearings or Bushings No External Levers, Weights or Springs Hard or Soft Rubberlining Available 2"-24" Size Range Backflush Devices Proximity Switches</p>  | <p>Figure 510/511 AWWA Butterfly Valve</p> <p>Complies with AWWA C-504 Class 150B Flanged or MJ Ductile body and disc Seat in body Flow through disc on 30° and larger Epoxy Paint on all sizes standard 3" - 72"</p>  |
| <p>Figure 565/566 General Service Butterfly Valve</p> <p>Meets MSS SP 67 Cast Iron Body Bronze Disc Other Materials Upon Request Wrench or Gear Operated Available 2"-24" Size Range</p>  | <p>Figure 740A Double Disc Check Valve</p> <p>Wafer pattern check valve rated for 250 psi. Available in sizes 2"-36" with a SS Disc/EPDM Seat</p>  | <p>Figure 821A Globe Style Check Valve</p> <p>Center guided check valve. SS Disc/EPDM Seat and is available in sizes 2"-24".</p>  | <ul style="list-style-type: none"> • ISO 9001:2000 Certified • Field Services Available • Engineering Services |



2625 Brodhead Road • Suite 100
Bethlehem, PA 18020-9081
phone: 610.861.8803 • fax: 610.861.8094

www.millikenvaive.com